



interal
ÇUHADAROĞLU

interal

ÇUHADAROĞLU

INDEX

INDEX

ALUMINUM DOORS	3
EEA Door System	4
ATR 9102 DCS.....	6
ATE 7600 Series	8
ATE 7602 DCS	9
ATE 7601 CS	9
SUPPLEMENTARY UNITS	11
DOOR PANELS	12
GLASS DECORATIONS	16
HANDLES - PULL HANDLES.....	17
HANDLES - PUSH HANDLES	18
HINGES	19
LOCKS 20	
CYLINDERS	22
COLOR.....	23



12



THERMAL INSULATION
SECURITY
FUNCTIONALITY
INDIVIDUAL DESIGN

ALUMINUM DOORS
ALUMINUM DOORS

EEA DOOR SYSTEM

THERMAL INSULATION, SECURITY AND FUNCTIONALITY WITHOUT COMPROMISING ON FORM



In our high-quality door systems for commercial properties, apartment buildings, and individual houses, the name EEA represents not only perfect operation and maximum security but also optimum thermal insulation as well as sophisticated and modern conception of aesthetics. Moreover, with almost unlimited freedom of creativity, EEA lends every building an identity of its own.

Our doors for commercial properties and houses are sturdy, durable and low-maintenance. Thanks to the special design with a special material composite, they retain their ease of operation and rigidity at all times even under exposure to extreme temperatures. At the same time, they are characterized by their outstanding insulation properties.

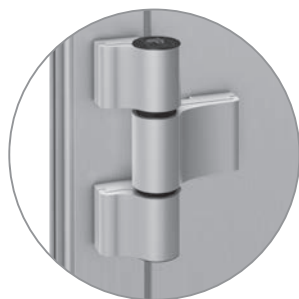
With a selection of high quality door fittings, a wide range of accessories, various security features, and many decorative door panel options, we offer right door to meet every project-specific requirement.

- Maximum energy efficiency.
- Various fittings and accessories options.
- Slender elevations.
- Large selection of decorative door panels.
- Flush inside and outside door sash.
- High security level with multipoint locks, hinges and security pins.

DREAM YOUR DOOR AND LET US BUILD IT UP!

We bring together a fixed frame, a leaf frame and a panel in the respective chosen color. Here, you can always choose between a door with a visible door leaf in various profile variants or a door panel that covers the door leaf on one or both sides.

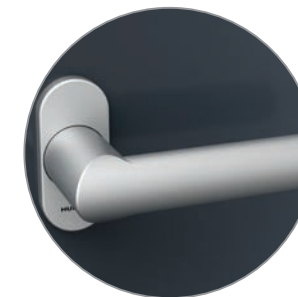
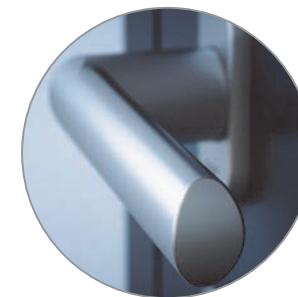
Dream your door and let us build it up!



Perfect appearance with either a surface-mounted hinge or an elegant concealed hinge.

Full flexibility in design. Aluminum sandwich panels in many design alternatives or with a special design of your own.

In line with your needs, various profile depths and panel thicknesses are available.



Your personal style. Individualize your dream door with a matching door handle.



Optimum Safety with various lock types from automatic to electronic.



Well-thought out in every detail. Thermally broken threshold guarantees an optimum weather-proof sealing and functioning for years to come.

ATR 9102 DCS

A CLASS OF ITS OWN - CUSTOM ENTRY DOORS TO MEET HIGH STANDARDS



In the event of especially strict requirements for the property's doors, ATR 9102 DCS is the system of choice: here, maximum thermal insulation, architectural elegance and profiles with narrow visible areas are combined in a modular system.

ATR 9102 DCS ensures not only perfect operation and maximum security but also maximum thermal insulation and sophisticated, modern aesthetics.

This elegant, premium entry door system meets even the strictest requirements of weatherproof sealing and thermal insulation - through to the passive house level.

Highlights:

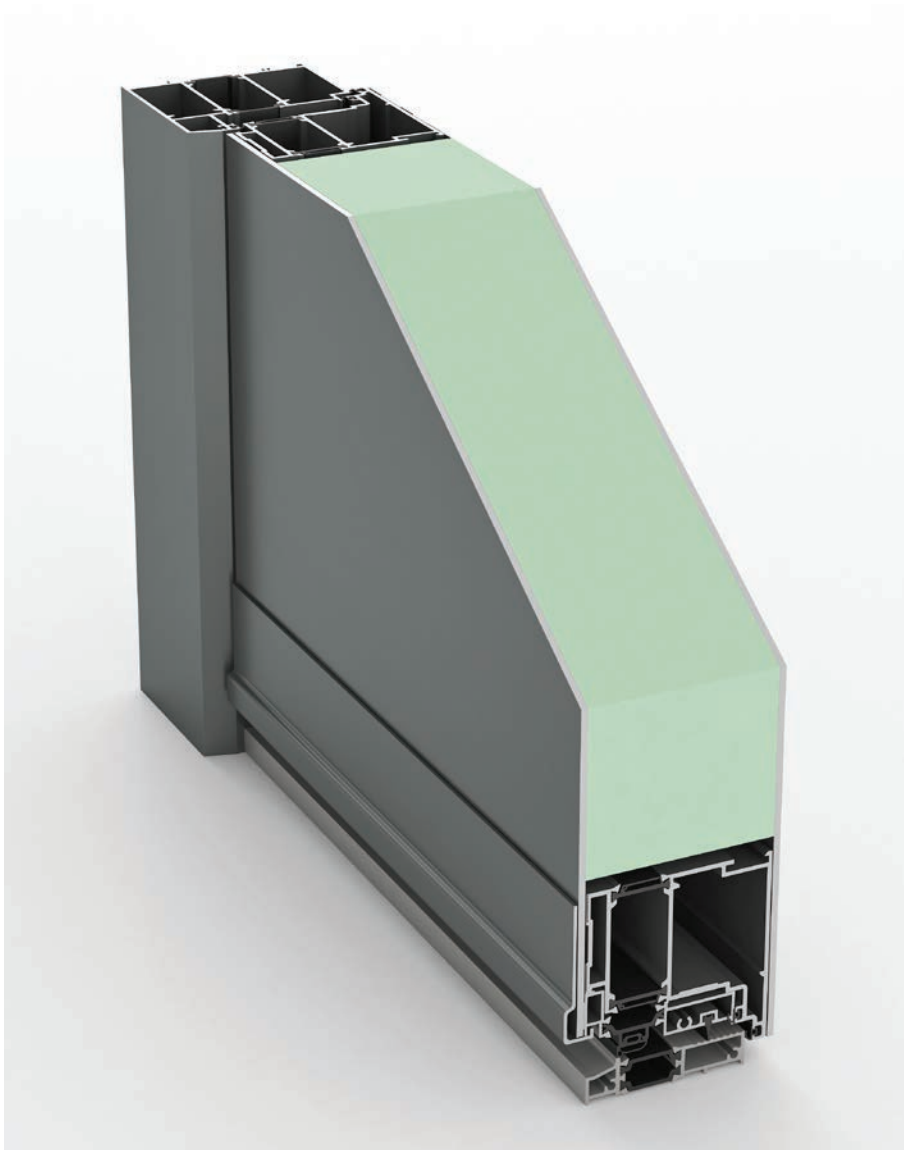
- Sturdy profile construction with 92,5 mm frame - 91 mm sash depths.
- Slender elevations.
- Optional decorative door panel.
- Leaf-enclosing door inserts both sides.
- High security level with multipoint locks, hinges, and security pins.
- Special polyamide thermal break with anti bi-metal effect prevents sash deflection in case of high temperature differences between indoors and outdoors.

Technical Specifications

U-Value	≥ 0.85 W/m ² .K
Minimum Width	800 mm
Maximum Width	1,300 mm
Minimum Height	1,800 mm
Maximum Height	2,400 mm
Panel Thickness	91 mm

ATR 9102 DCS

HIGHLY INSULATED PREMIUM DOOR!



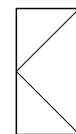
ATR 9102 DCS

Maximum blockage to air permeability and water leakage is obtained by continuous EPDM gasket pressure from three points.

The thermally broken threshold with gasket pressure on three points highly contributes to energy efficiency.

91 mm thick aluminum sandwich door panel insert places this model over the top in means of thermal insulation, and sound-proofing.

OPENING TYPES



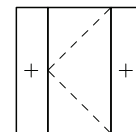
One leaf door
outward opening



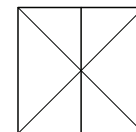
One leaf door
inward opening



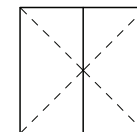
One leaf door
with toplite



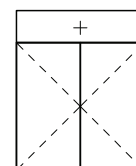
One leaf door
with sidelites



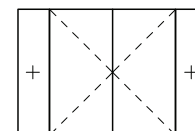
Two leaves door
outward opening



Two leaves door
inward opening



Two leaves door
with toplite



Two leaves door
with sidelites

ATE 7600 Series

THE SOPHISTICATED, MODERN, AND AESTHETIC DOOR WITH HIGH THERMAL INSULATION

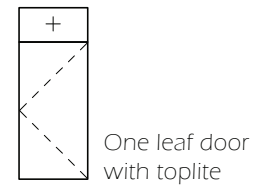
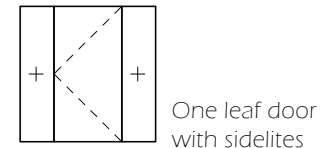


The entry door not only protects the home from wind, weather, and unwanted intruders but also acts as a statement of personal style. The high-quality 7600 Series entry doors combine modern elegance with energy efficiency, durability, and security. With almost unlimited creative freedom, 7600 Series is ideal for satisfying the main expectations from an entry door.

Highlights:

- High energy efficiency.
- Slender elevations.
- Wide selection of decorative door panels.
- With door panels that overlap outside or both outside and inside, this series offers a multitude of creative possibilities.
- Flush inside and outside for doors opening inwards or outwards.
- Special polyamide thermal break with anti bi-metal effect prevents sash deflection in case of high temperature differences between indoors and outdoors.

OPENING TYPES



ATE 7600 Series

YOUR ENTRY DOOR - YOUR INDIVIDUAL STYLE!



ATE 7600 Series offers two different application options:

ATE 7602 DCS

Double side leaf-enclosing door insert | Both sides concealed sash application.

ATE 7602 DCS is a system providing minimum visible frame line both from the outside and inside. Decorative door panel insert overlaps leaf profile on both sides to conceal. Only visible profile in this system is the fixed frame. 76 mm thick decorative aluminum sandwich panel provides very high thermal insulation.

Technical Specifications	
U-Value	$\geq 1,3 \text{ W/m}^2\cdot\text{K}$
Minimum Width	800 mm
Maximum Width	1,200 mm
Minimum Height	1,800 mm
Maximum Height	2,300 mm
Panel Thickness	76 mm



ATE 7601 CS

One side leaf-enclosing door insert | Outside concealed sash application.

The decorative door panel overlaps the leaf profile when looked from the outside, minimizing the visible frame line. Aluminum sandwich panel insert, with 36 mm high density foam filling, provides high thermal insulation.

Technical Specifications	
U-Value	$\geq 1,5 \text{ W/m}^2\cdot\text{K}$
Minimum Width	800 mm
Maximum Width	1,200 mm
Minimum Height	1,800 mm
Maximum Height	2,300 mm
Panel Thickness	36 mm





QUALITY IN ITS
MOST BEAUTIFUL FORM

SUPPLEMENTARY UNITS
SUPPLEMENTARY UNITS

DOOR PANELS

THE KEY TO INDIVIDUAL AESTHETICS

There are a wide variety of door panel design alternatives for EEA Doors. Since we manufacture decorative door panels in-house, you may either select a design from the available models or create a unique design according to your taste. If you have adequate time to have your personalized door, please contact EEA team and share a CAD file of your design. We will discuss the applicability of it and then together, we may realize your dream door. It will be a great pleasure and honor for us to be a part of your individual experience.

Each door panel can be powder coated to various colors or laminated with different patterns. Please refer to colors section of this catalogue for color and lamination options.

**Jersey****Lancaster****Nice****Nancy**

DOOR PANELS

DOOR PANELS
THE KEY TO INDIVIDUAL AESTHETICS



Chester



Como



Calais



Memphis



Metz



Marbella



Norwich



Tenedos

DOOR PANELS



Hershey



Redding



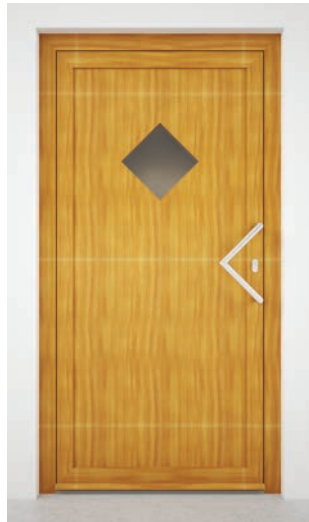
Santander



Corsica



Atlanta



Richmond



York



Austin

DOOR PANELS

DOOR PANELS
THE KEY TO INDIVIDUAL AESTHETICS



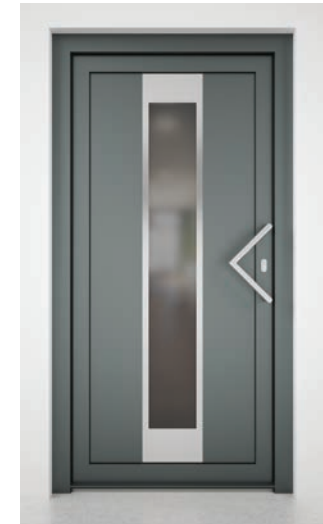
Tampa



Hampton



Albany



Essex



Werder



Bergamo



Wiesenburg



Pescara

GLASS DECORATIONS

You can choose the glass to portion of your door among four different decoration options, according to your taste, purpose of use or the privacy level you prefer. All glasses we use are tempered to provide extra strength and safety.



EXTRA CLEAR GLASS



ORNAMENT 504



CLEAR & SATINATED



SATINATED

HANDLES

PUSH HANDLES

As well as the door system and the panel design, handles play an important role in the general appearance and functioning of the door. For EEA Doors we prefer the products of leading German vendors to meet expectations of a stylish and durable push handle at SK 2 security level.



E138F

Paris



E150F

Bonn



E1400F

Amsterdam



E1138F

Marseille



E1313G

Liverpool



E138GF

Paris



E150GF2

Bonn



E1400GF2

Amsterdam



E1138GF2

Marseille

HINGES

HINGES

The overall appearance of EEA Doors is rounded off by large selection of high-quality, stylish push handles, pull handles and rosettes. Likewise, the door hinges need not only to offer excellent performance but also to impress visually.

With EEA, you can choose between sophisticated concealed hinges and classical surface (screw-on) hinges - in a variety of materials and surface finishes, such as stainless steel look, or powder-coated RAL colors.



ATB 80

- For conventional doors.
- Depending on the door design and dimensions, max. load capacity: 120 kg.
- Directly mounted on frame and leaf.
- Suitable for inward and outward opening.
- Maintenance-free bearing bushes.
- One-man adjustment of the door.
- All adjustments are possible without removing the cover plates.
- Adjustment directions and distances.
x: ± 3 mm / z: $+3$ mm / y: $\pm 0,75$ mm
- Opening angle: 180° .



ATB 120

- For heavy duty doors.
- Depending on the door design and dimensions, max. load capacity: 160 kg.
- Directly mounted on frame and leaf.
- Suitable for inward and outward opening.
- Maintenance-free bearing bushes.
- One-man adjustment of the door.
- All adjustments are possible without removing the cover plates.
- Adjustment directions and distances.
x: ± 3 mm / z: $+3$ mm / y: $\pm 0,75$ mm
- Opening angle: 180° .



Solid C - Concealed Hinge

- New trend for modern, elegant doors.
- Depending on the door design and dimensions, max. load capacity: 140 kg.
- Concealed placement of the hinges provide uninterrupted frame line.
- Suitable for inward and outward opening.
- Requires no maintenance.
- Fast and simple height adjustment using a central adjusting screw.
- Adjustment directions and distances.
x: ± 3 mm / z: $+4$ | -2 mm / y: $\pm 1,2$ mm
- Opening angle: 110° .

Our reversible latches and latch bolts are Secured against backward pressure, and our multi-point locking system with an automatic latch bolt offers maximum security.

Highlights:

- Alternatives; with exposed or concealed hinge side.
- Easily upgraded to burglar resistance.
- Top German quality with reliable operation and minimal maintenance requirements.
- Corrosion resistance class 5 in accordance with EN 1670.

EEA offers locks in 4 main types:

MANUAL LOCKS: The mechanism is activated by the manual movement of the lockcylinder via the key to lock or unlock the door. Locking is not only an action to sustain security but also an important measure to ensure tight closing for energy efficiency.

ENTRY GUARD: The system takes the place of door chains. Door can be opened just enough to hold a conversation but prevent entry. The concealed fitting looks more stylish than old-fashioned door chains and does not damage the door surface. It releases immediately when the key is used to open the door from outside or when unfastened using the entry guard knob.

AUTO LOCKS: This mechanism is developed to eliminate the risk of forgetting to lock. Simply pulling the door closed, mechanically activates the extension of an automatic bolt that triggers a secure locking operation.

ELECTRONIC LOCKS: An electric motor automatically locks the door when the door is closed. The door is unlocked using a remote control or any other contactless electronic safe access system such as Bluetooth or biometric devices like fingerprint reader or retina scanner for enhanced security. In emergency cases, when there is power failure, keyless solutions permit manual opening with a key from the outside.









Entry Guard



Solid Hook & Bolt

LOCKS

LOCKS TYPES

Lock Type	Art. Code	Description	Function	
Manual Locks	OD-LM-2PCL	2 Points Combi Lock	A combination of solid hook and bolt in addition to a central lock.	
	OD-LM-17PCL	17 Points Lock	Two solid hooks with claw action, twelve safe bolts and the central deadbolt.	
	OD-LM-2PEG	2 Points Entry Guard	Two safe bolts and a central lock accompanied with Entry Guard system.	
Auto Locks	OD-LA-2PB	2 Points Auto Lock	Two latchbolts and the central dead bolt locks automatically when the door is closed.	
Electronic Locks	OD-LE-2PM	2 Points Electromechanical Lock	Two combi locks, automatically locks. Automatically unlocks by an electric motor.	
	OD-LE-2PE	2 Points Electronic Lock	Two combi locks automatically locks and unlocks by an electric motor.	

Electronic multipoint locks can be equipped with various access control systems:

- Selfmatic Comfort: Remote Control
- Selfmatic Comfort Plus: Pin Code Keyboard
- Selftronic: Bluetooth connection with mobile devices
- Selftronic Biometric: Fingerprint Scanner
- Selftronic Biometric Plus: Retina Scanner

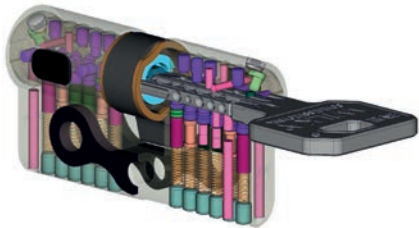


RETINAL SCAN



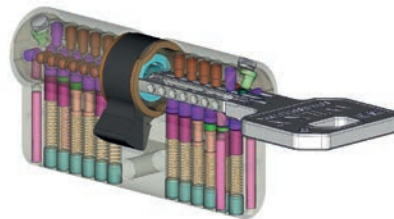
CYLINDER & KEYS

To fulfill high security requirements, we equip our door security systems with high quality WILKA lock cylinders. WILKA has solutions available for different locking and intrusion blocking questions



Primus HX

- The cylinder for highest security requirements. Reversible-keying-cylinder equipped with maximum mechanical features as protected and registered individual locking with registration card.
- Highest degree of copy protection.
- Anti-picking pin-enhanced security against unauthorized opening methods.
- Hardened steel insert counteracts attempts to tear cylinder off.
- Anti-drilling protection due to solid metal pins



System 3VE

- Drilling protection due to one core and one housing pin made of hardened steel.
- Special bar-bell pin against picking force.
- Highest degree of copy protection.
- Predetermined breaking point for forced opening trials.
- Sea water resistant design.



TH 6

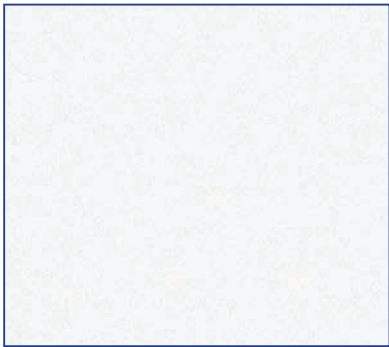
- Special pins against picking resistance.
- Drilling protection due to one core pin made of hardened steel.
- Highest degree of copy protection.
- Sea water resistant design.

COLOR

COLOR OPTIONS

We care about the environment. And we don't want our products to harm the planet. But we also will not compromise on quality. This is why we choose Interpon powder coatings from Akzo Nobel for coloring all EEA products. Interpon D powders have been developed in an environmentally sustainable way. They meet all the major architectural quality standards.

Interpon D powders are available in an extensive range of appearances which span durable to hyper durable finishes. They enhance the beauty and longevity of the world's building, whatever the location and climate. And also with anodic colors, instead of chemical anodization process, we use powder coatings from Interpon Collection Anodic for exclusive metallic effect finishes.



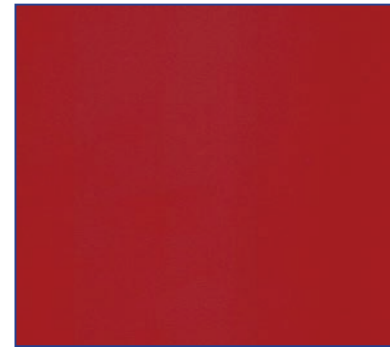
Metallic White



Metallic Anthracit Gray



Metallic Brown



Metallic Red



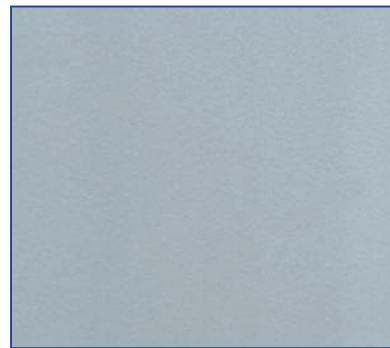
Metallic Silver Gray



Metallic Light Black



Anodic Gold I



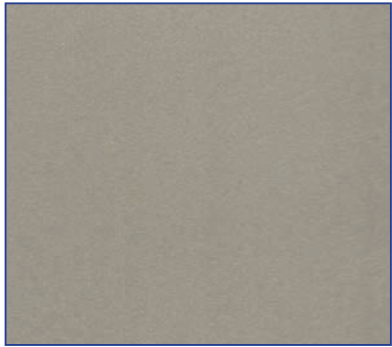
Anodic Silver Gray



Metallic Dark Gray



Metallic Beige I



Metallic Beige II



Metallic Beige III



Metallic Black



Metallic Maroon



Metallic Light Maroon



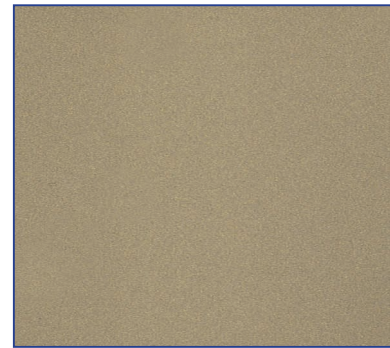
Metallic Orange Light



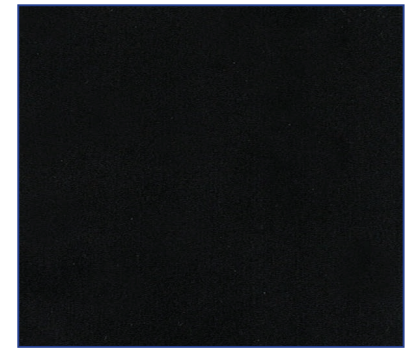
Steel Blue Platinum



Metallic Bronze



Anodic Gold II



Metallic Black Sable

We have made every effort to make the colors and finishes on paper as close as possible to the colors and finishes of the products you will use. However, we cannot guarantee an exact match in colours and finishes of the images. The representation of colors, gloss levels, metallic effects and textures are limited by technology and may vary due to print settings. Please contact our team members for real color samples before purchasing your product.

interal

ÇUHADAROĞLU

Çuhadaroglu Metal Sanayi ve Pazarlama A.S.

Yakuplu Mahallesi Hürriyet Bulvarı No: 6 - 8
34524 Beylikdüzü - Istanbul
TURKEY

Phone +90 212 224 20 20

www.interal.com.tr www.cuhadaroglu.com
iletisim@cuhadaroglu.com

interal
ÇUHADAROĞLU is Exclusive Dealer of **E** | **E** | **A**
ALU | METAL | PVC for aluminum entry doors and their components.